

ChargeBox®

Keeping the mobile world powered

Product Information

ChargeBox Mini

Secure Phone Charging

ChargeBox® Unit 2D, Bollo Lane, Chiswick, London, W4 5LE

+44 (0)20 3588 1060

| info@chargebox.com

| www.chargebox.com

Introduction

ChargeBox is the global leader and pioneer in providing self-service charging solutions for public spaces. Distributed to over 40 countries and over 2,000 stations deployed, our systems deliver more than 7 million charges to mobile devices annually across business sectors.

Our in-house team is responsible for designing, software coding, engineering and assembling all stations in the UK while maintain a primarily EU supply chain.

The Best Customer Experience is Paramount

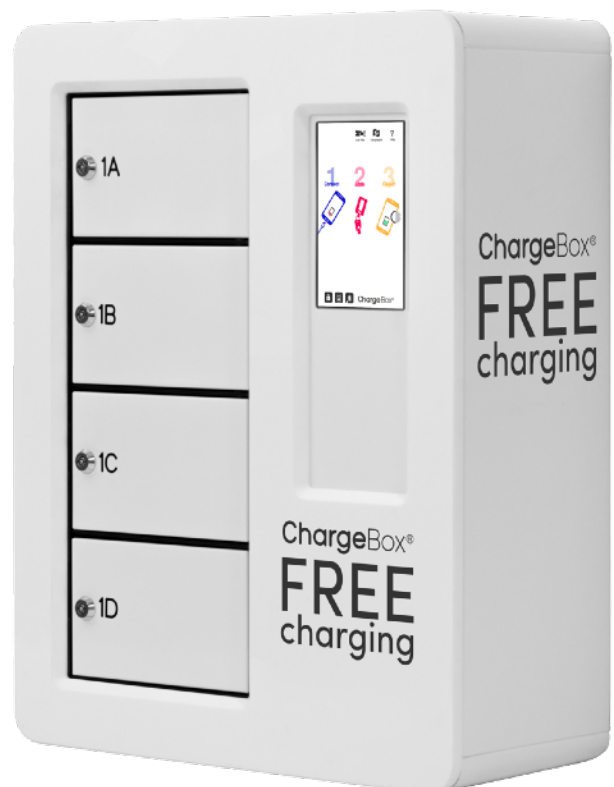
At the core of ChargeBox is to deliver a wonderful client and customer experience.

Maximum Security — Patent pending SmartLock 2.0 key system. Charging over 7 million devices annually we experience zero device theft or damage.

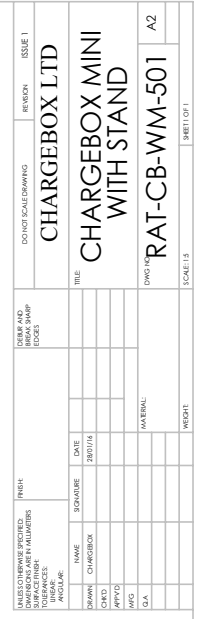
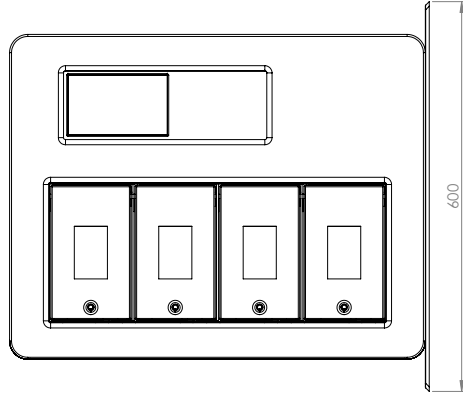
Ease of Use — ChargeBox's proprietary SmartLock system detects your device before enabling you to secure the door. It takes as few as 4 seconds to use connect a device then secure the locker. Furthermore, should power be cut to the station, the user is always in control of the security and can retrieve their device at any time using their key.

Best Charging Technology — Our certified technology is capable of charging iPhones in half the time compared to the packaged wall charger Apple supplies. Our iPhone and iPad charging cables are sourced directly through Apple Inc.

Real-time Analytics — Enables management information, automated remote diagnostics, and service monitoring.



Specification	Detail	Options
Composition	Mobile device charging station with securely fitted USB charging cables in 4 lockers utilising proprietary SmartLock Key System. Wall fixed or table mountable.	A stainless steel tabletop stand is available
Dimensions & Weight	<ul style="list-style-type: none"> - 650(H) x 530(W) X 230(D) mm - 30 Kg when wall mounted - 40 Kg when fitted to the optional table stand 	
Dimensions & Weight (packed)	<ul style="list-style-type: none"> - 660(H) x 620(W) x 520(D) mm - 35Kg 	Multi-use transport case optional
Electrical	110V (60Hz), 220V (60Hz), or 240V (50 Hz) with fused 3A supply. PSU is rated at 100W	
Power Usage (idle)	~16W	
Typical Power Usage	~32W (includes 2-3 phones charging)	
Max Power Usage	~45W 3 lockers on full charge and the 4th on activation	
Colour	Traffic White finish (RAL 9016)	Frame and front panel can be wrapped in vinyl with client's artwork
Cabinet	Steel sides, top and bottom. Acrylic front panel	
Computer & User Interface Panel	<p>ARM-based Single Board Computer controlling 7" capacitive-layer touch display.</p> <p>Touchscreen provides user instructions and engineer access diagnostics. Multi-language support included</p>	Additional language development options
Lockers	Four chambers, offering guaranteed* security by way of proprietary SmartLock key system. Charging one device per chamber, with multiple USB connectors available	*Subject to service level agreement
USB charging cables	Standard specification: 8 no. high-current (2.1Amp / 10W) universal charging for all USB devices. Combination of enhanced microUSB, Type-C and genuine Apple cables securely fitted.	<ul style="list-style-type: none"> - Additional 8 charging points optional - Support for all USB Power Delivery power levels; 15 / 27 / 45 / 60W optional
Display Monitor	Not applicable	The single board computer is capable of controlling media to third party displays. Some development may be required.
Connectivity	Ethernet/WiFi telemetry: transmits data relating to all aspects of the machine's performance, status and health	GSM router can be connected via ethernet or WiFi to the single board computer. Recommended data allowance: 250mb/month excluding changes to digital signage.
Management information	Real-time analytics enables management information, automated remote diagnostics, and service monitoring	Full or partially managed service options.
Customer Engagement	None as standard	Bespoke software developments available. E.g. phone number entry.



ChargeBox Mini on Location

